

# Must Read Before Use

## I . Suitable Batteries

Due to logistics restrictions, we are unable to provide the required batteries with the product. We sincerely apologize for any inconvenience this may cause. To help you quickly find suitable batteries, we have compiled some recommended links on Amazon for your reference.

AA Battery Link: <https://www.amazon.com/AmazonBasics-Performance-Alkaline-Batteries-8-Pack/dp/B00O869KJE>

**Note:** This product requires 3 self-supplied AA batteries.

## II . Update the AI Vision Module Firmware

Connect the AI vision module to your computer using a Type-C data cable. The firmware version can be viewed on the startup screen. If the version is earlier than V1.0.2, it needs to be updated to V1.0.2.



Before updating the firmware, you need to install the CH340 driver

on your computer, and then update the AI vision module firmware.

## **1. Install CH340 Driver:**

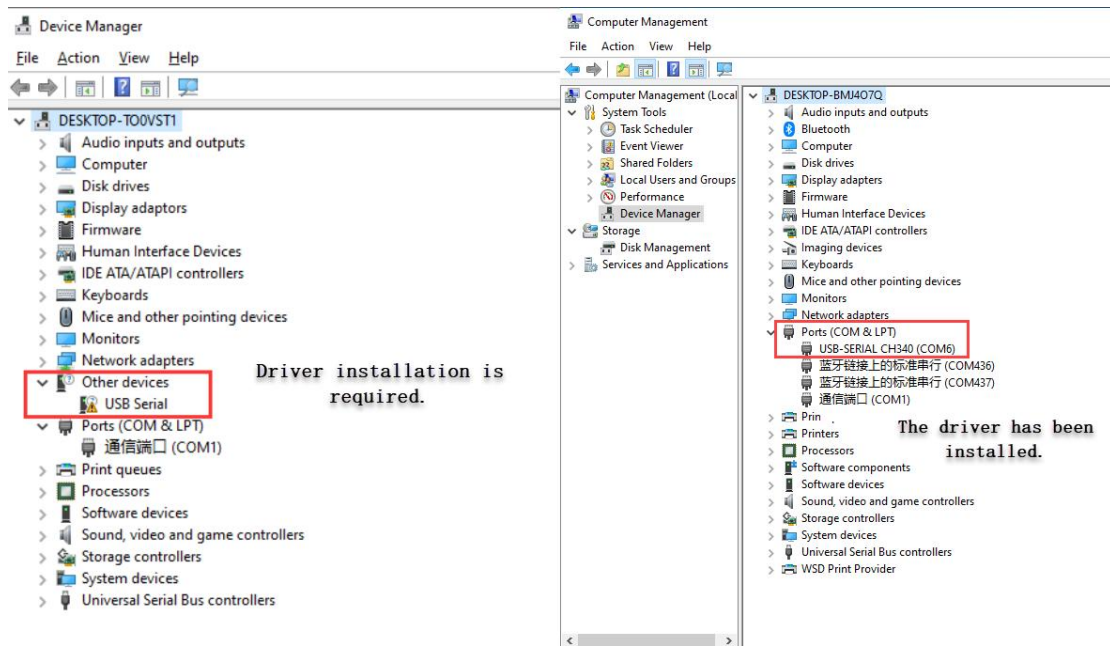
### **(1) Installing the CH340 driver on a Windows computer**

① Connect the AI Vision Module to the computer using a Type-C data cable.

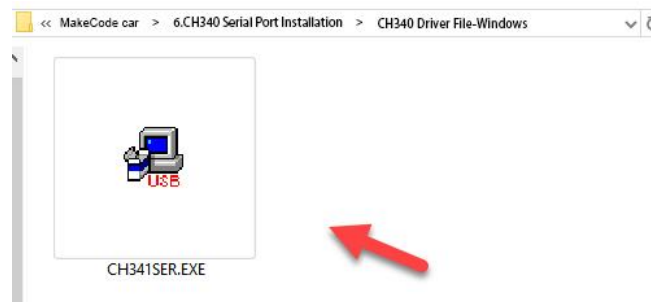


② Right-click "My Computer" -> "Properties" -> Click "Device Manager". Under "Other devices", if you see "USB Serial", manually install the CH340 driver.

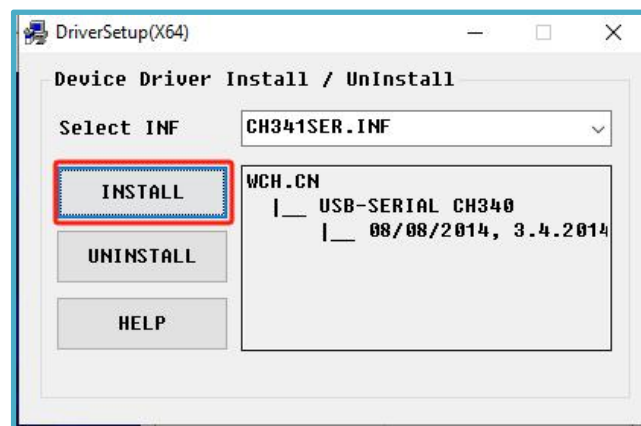
If "USB Serial CH340 (COMXXX)" appears under "Ports", the driver is already installed, and you can proceed to the firmware update step.

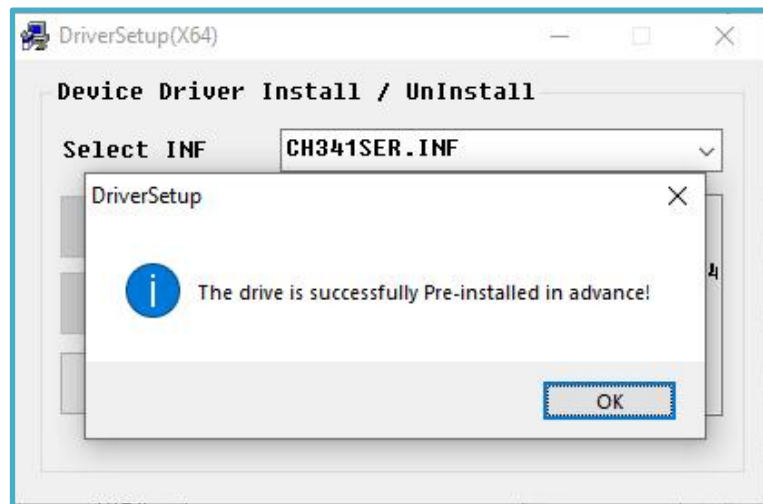


③Open the "[CH341SER.EXE](#)" file in the "English\MakeCode car\6.CH340 Serial Port Installation\CH340 Driver File-Windows" folder and click "Install".

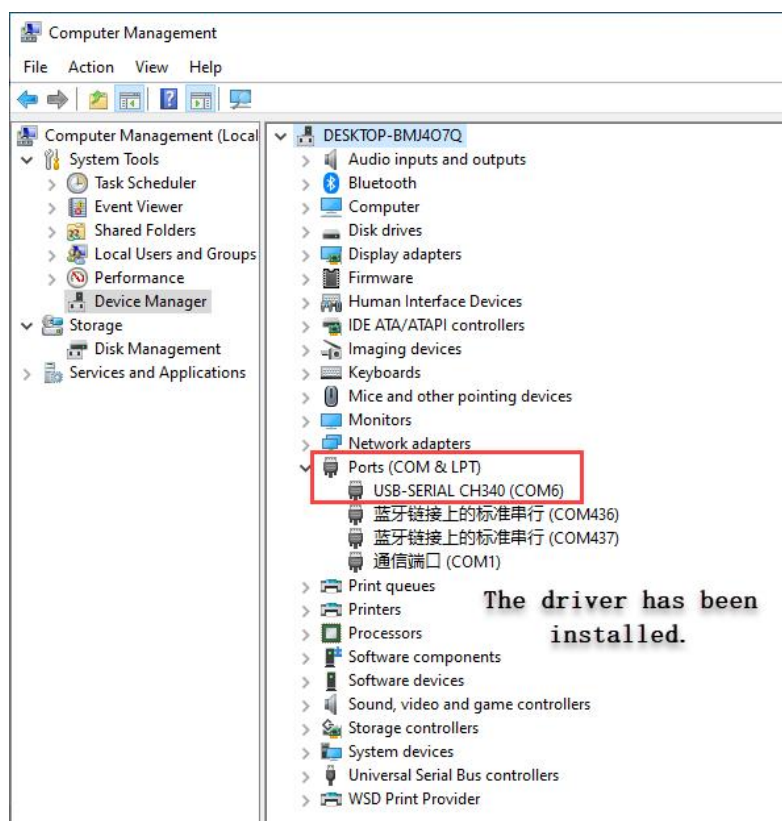


④After a moment, you will receive a success message. Click "OK".





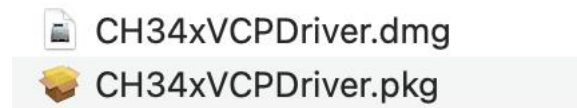
⑤After successful installation, "USB Serial CH340 (COMXXX)" will appear under "Ports", indicating the driver is installed.



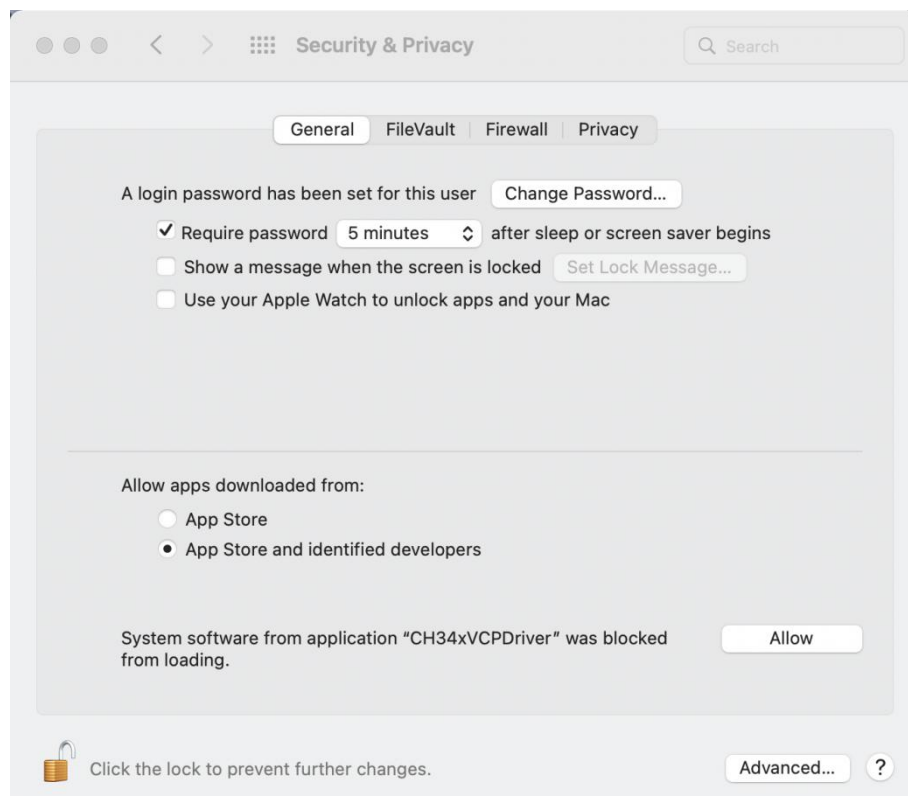
## (2) Installing the CH340 driver on a Mac OS computer

The driver file for Mac OS computers is located in "English\MakeCode\_car\6.CH340 Serial Port Installation\[CH340 Driver File-MAC](#)". If your system is OS X 11.0 or later and does not

support Rosetta, please install the dmg driver; otherwise, install the pkg driver by default.

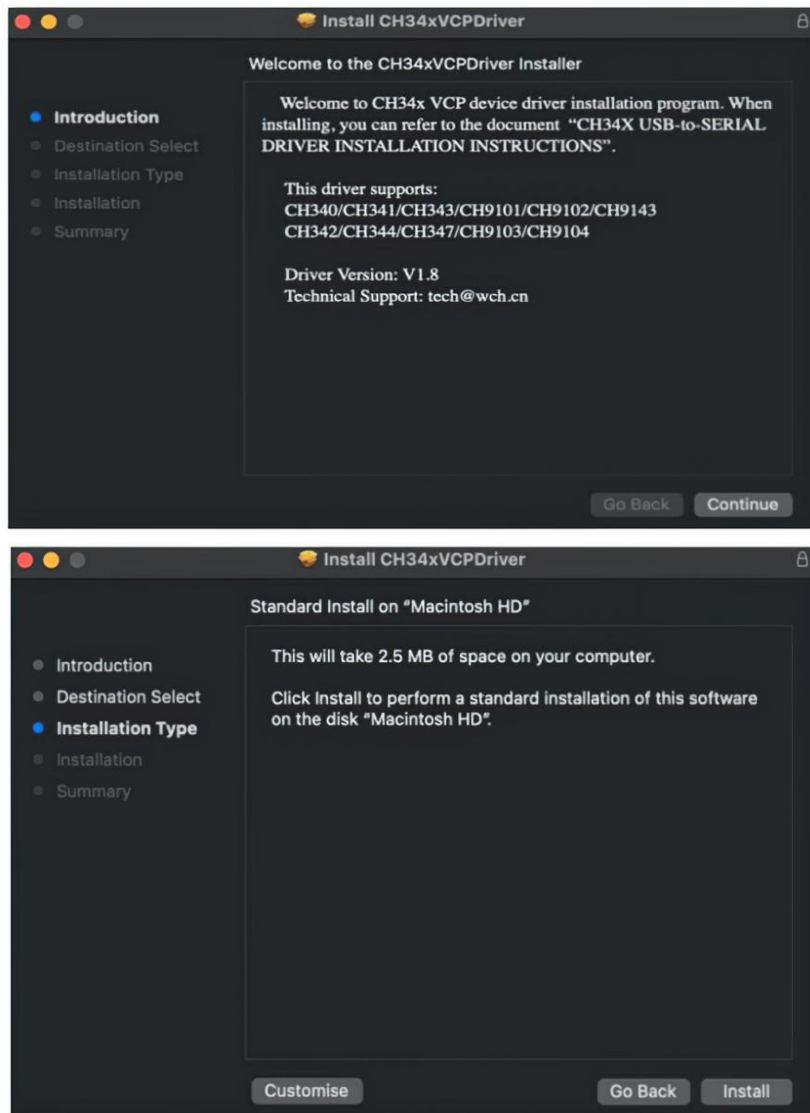


Before installation, go to the "System Preferences" -> "Security and Privacy" -> "General". Under the title "Allow apps downloaded from:", select "App Store and identified developers". This will ensure the driver runs properly.

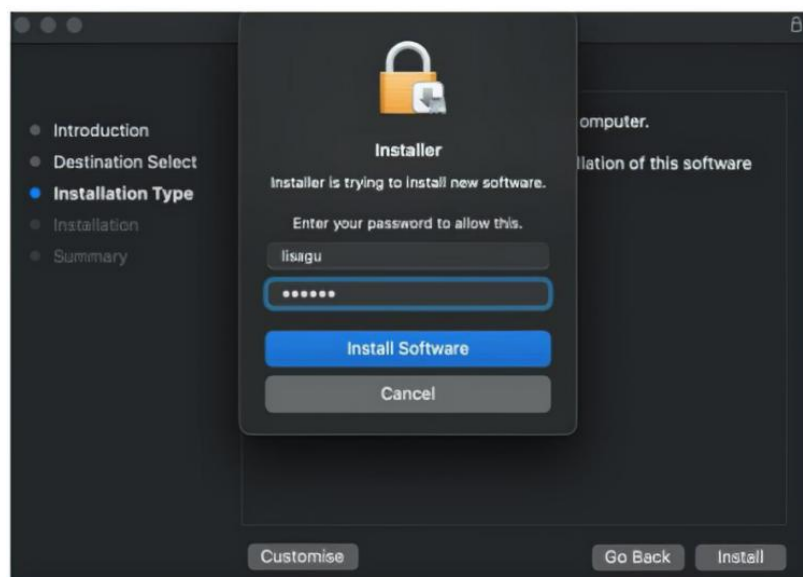


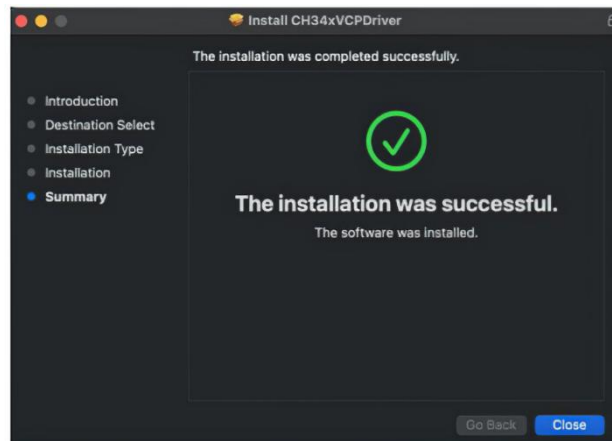
## 1) Install the drivers in the pkg format

① Open the driver file in .pkg format, click on the driver file-> Continue-> Install.

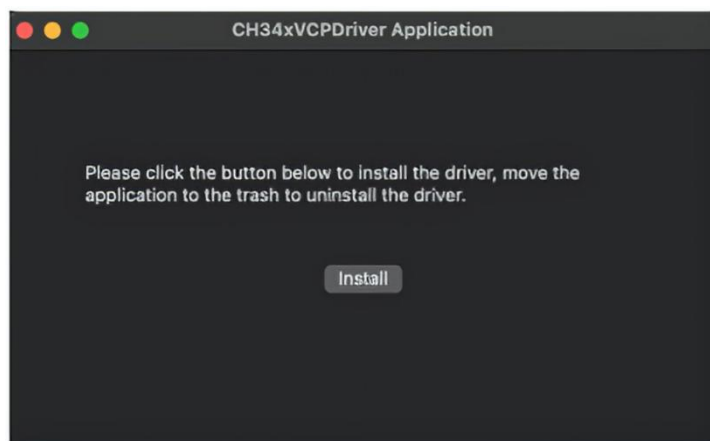


② Installed successfully.





③ Install the pkg format driver on OS X 11.0 and later: open "LaunchPad" -> "CH34xVCPDriver" -> Install.



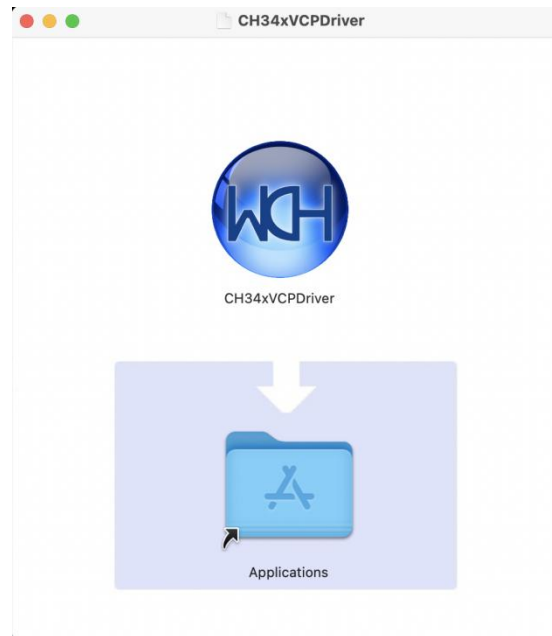
④ When using OS X 10.9 to OS X 10.15, click "Restart" to reboot the computer, and check if the CH340 driver has been installed successfully after the restart.



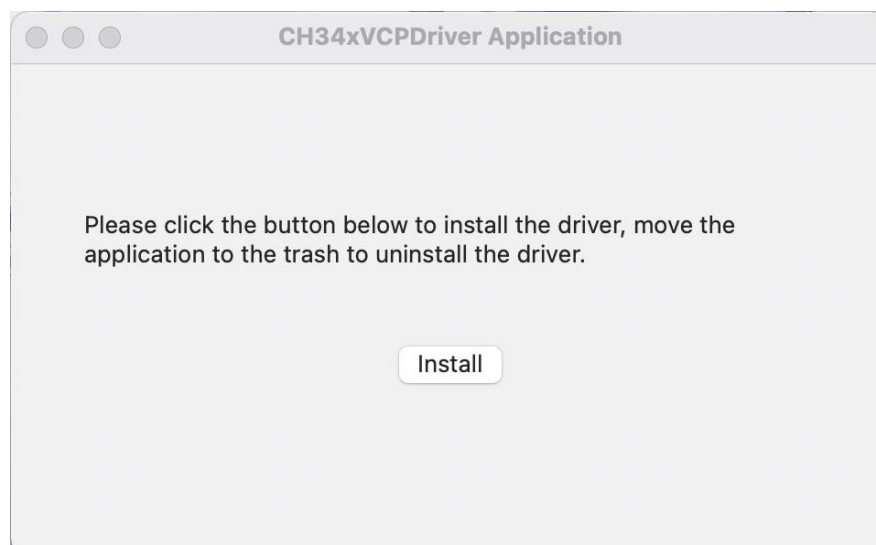


## 2) Install the dmg format driver

① Click the dmg file and drag "CH34xVCPDriver" to the application folder of the operating system.

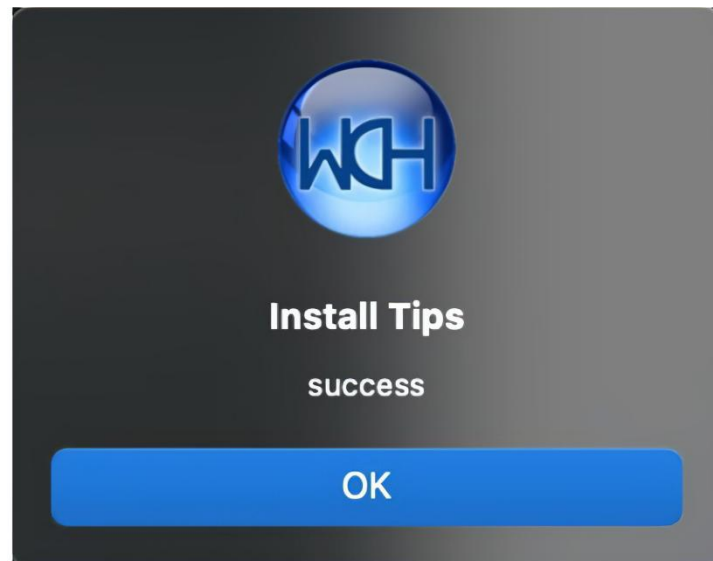


② Then open "LaunchPad" -> "CH34xVCPDriver" -> installation.



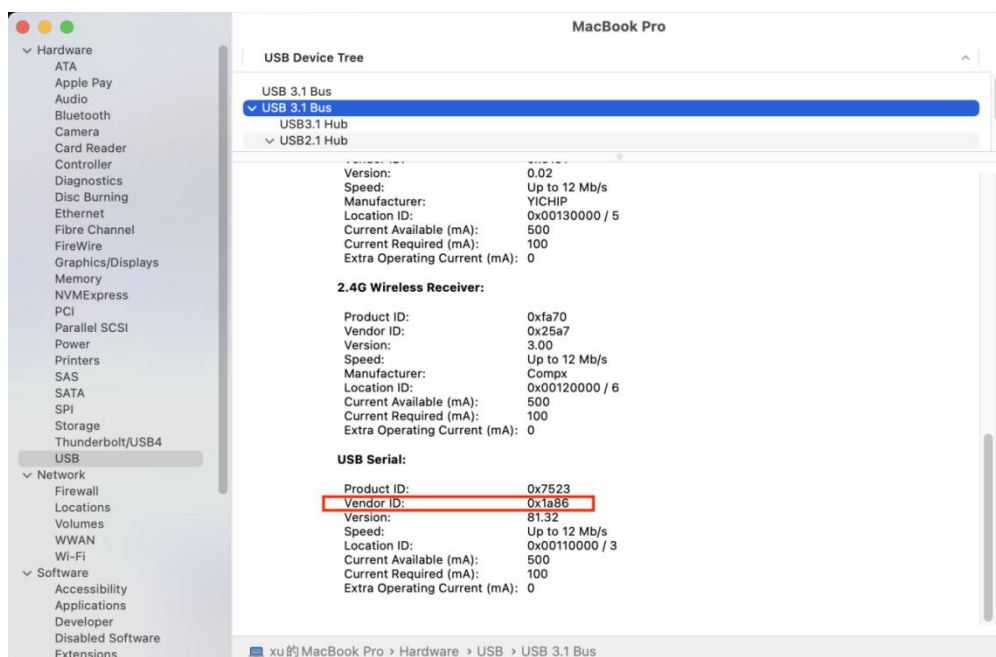


③ Installed successfully.



### 3) Check whether the CH340 serial port drive is fully installed

When you insert the dashboard into the USB port, open the System Report-> Hardware-> USB. The connected USB devices will be listed on the right side. If the USB device works properly, a device with "Vendor ID" [0x1a86] can be found.

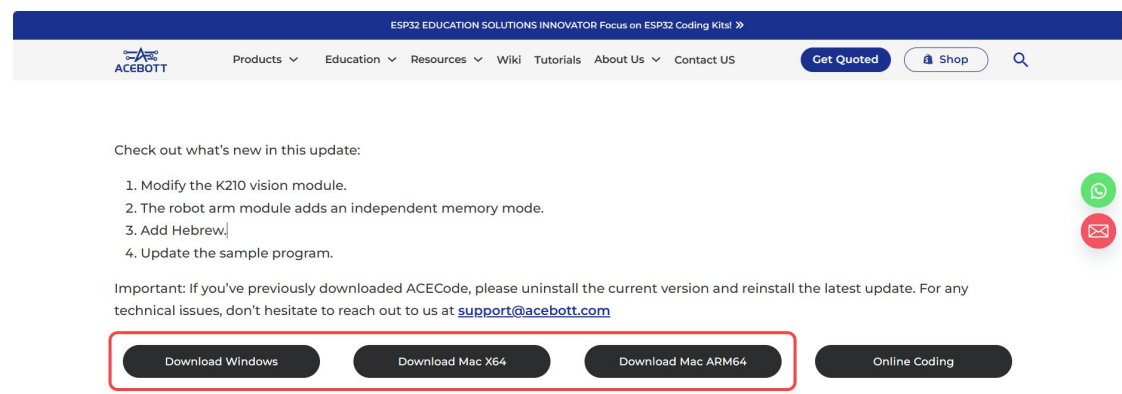


## 2. AI Vision Module Firmware Update

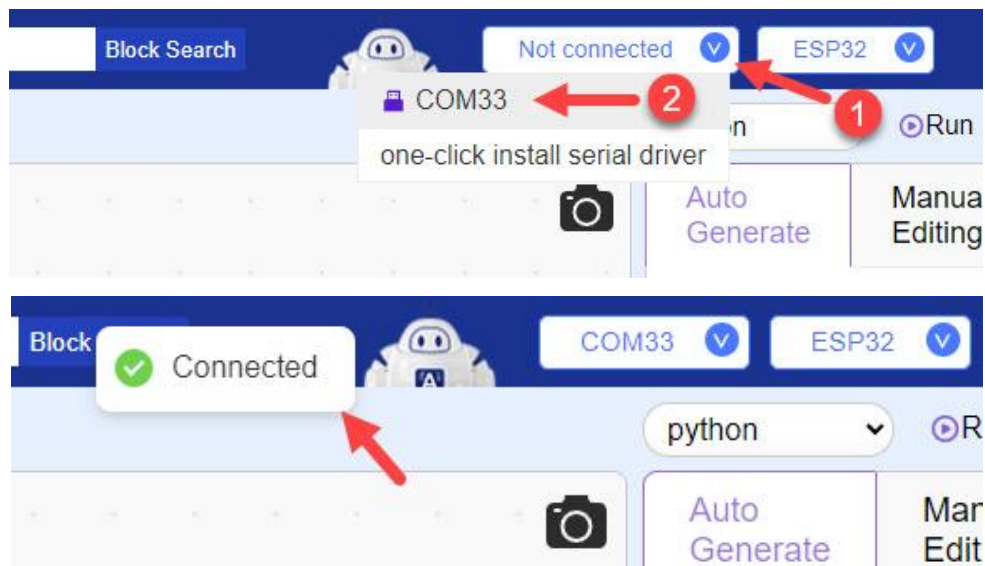
This tutorial provides two methods to update the firmware of the AI Vision Module: one via the ACECode software, and the other using the kflash tool.


### (1) Updating the AI Vision Module Firmware via ACECode

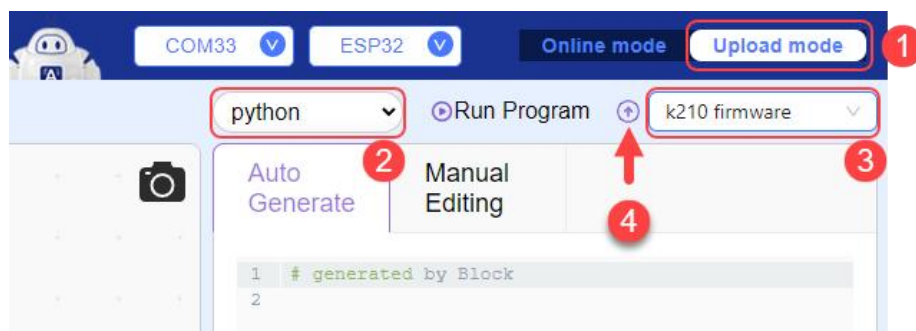
① Visit the official ACECode website: <https://www.acebott.com/pages/software>, enter the software download page, select the corresponding ACECode version based on your computer's operating system, and click to download the installer.

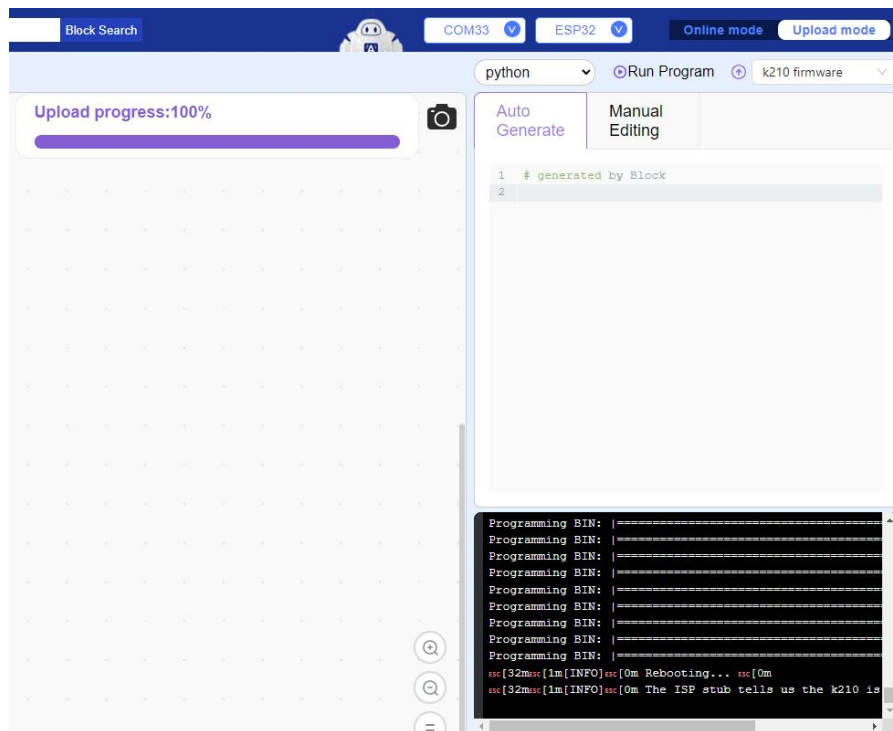


② Connect the AI Vision Module to the computer using a Type-C data cable. Launch the installed ACECode software, click the "Not connected" button on the interface, and select the corresponding COM port (e.g., COM33) in the pop-up window. After successful connection, the "Connected" prompt will indicate a successful link.



③Select "Upload mode," set the programming language to "Python," then locate the k210 firmware. Click the  icon to upload the latest version of the K210 firmware. When the progress bar shows 100%, the firmware upload is complete.



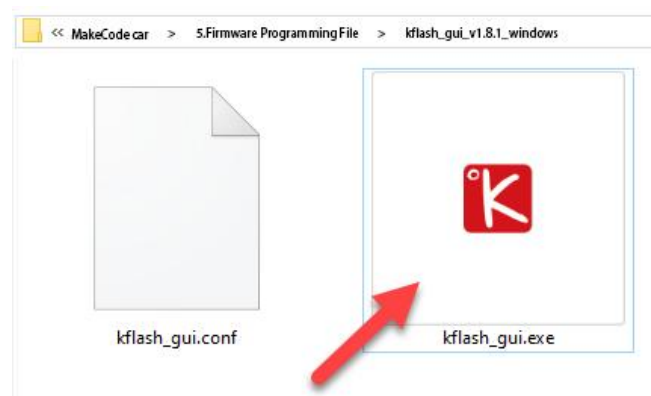


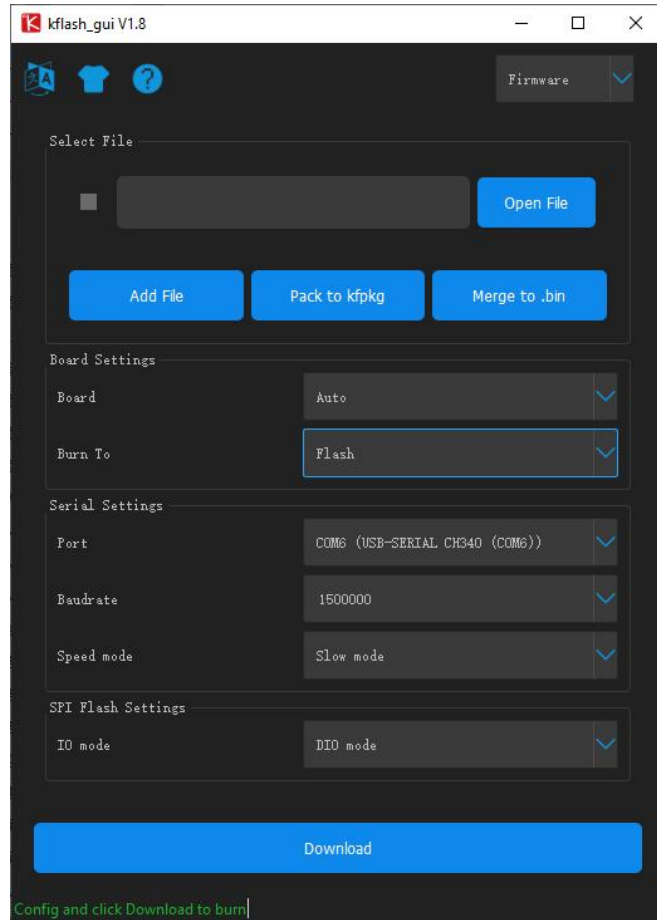
## (2)Updating AI Vision Module Firmware Using kflash Tool

### 1) Firmware Update Method for the AI Vision Module on Windows Computers

①Open the "[kflash\\_gui.exe](#)" file located in "English\MakeCode car\5.Firmware Programming File\kflash\_gui\_v1.8.1\_windows".

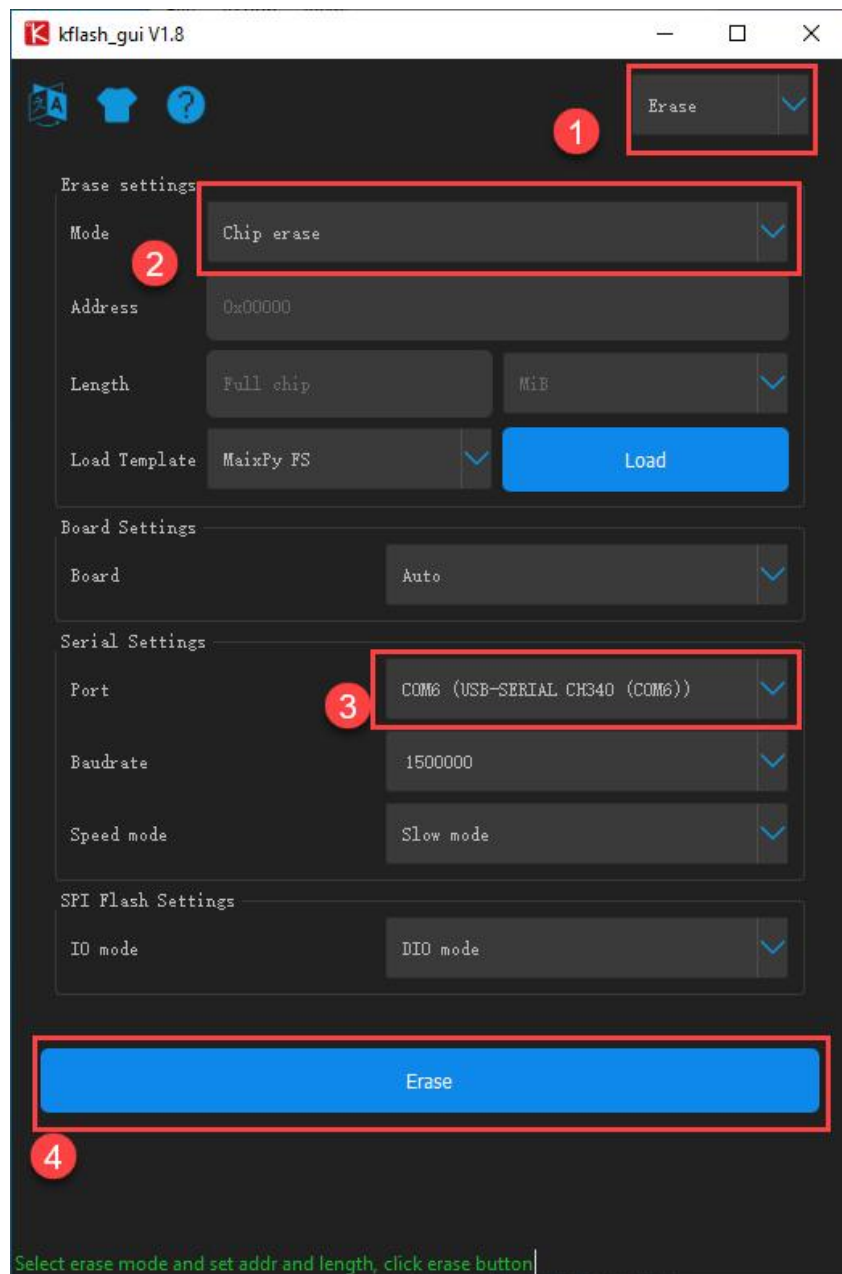
The interface should appear as shown below:





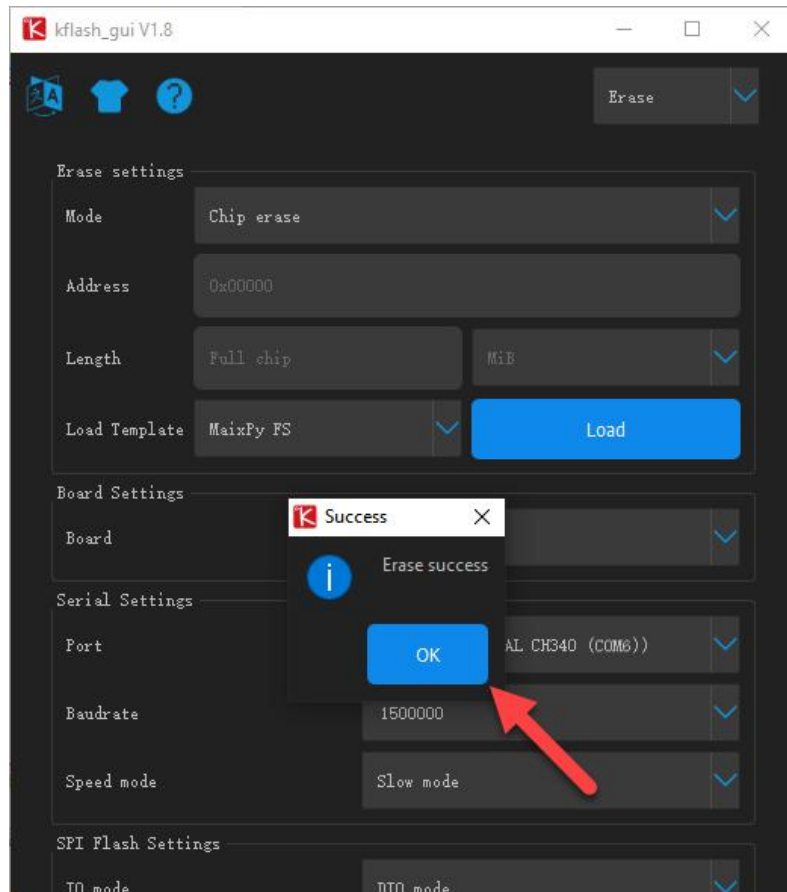
②Connect the AI vision module to the computer using a Type-C data cable. Before uploading the new firmware, you need to clear the original firmware. The operation steps are as follows: Set the mode to "Erase", then select the "Chip erase" mode, choose the serial port with the unique identifier "CH340" from the serial port list, and finally click "Erase" to perform the erasing operation.



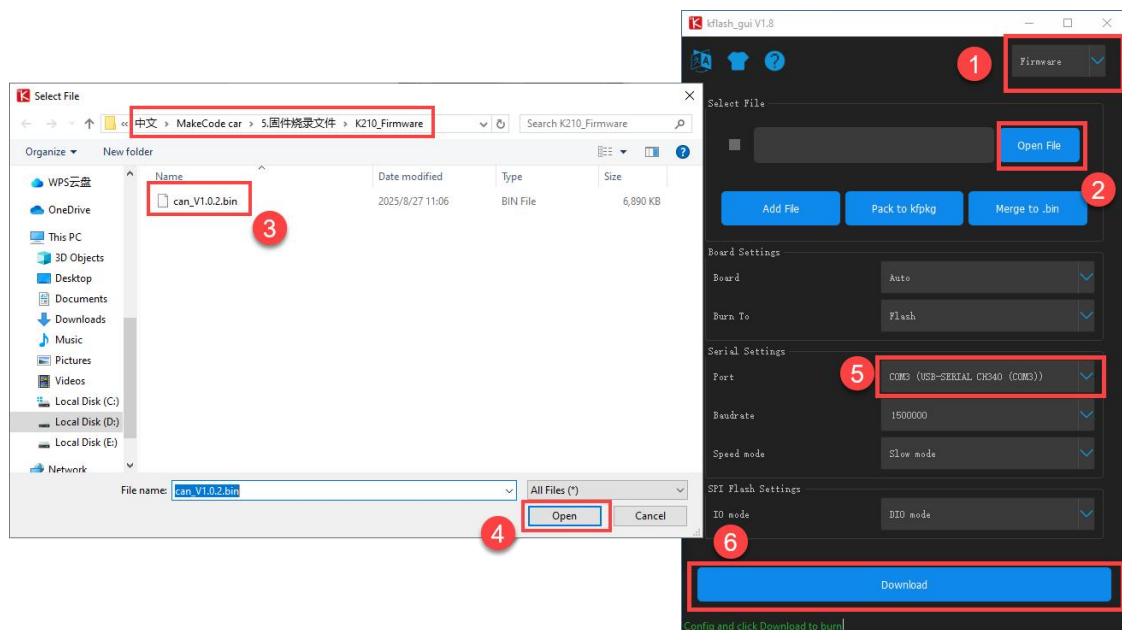


Note: If no available serial port appears, possible reasons include: the corresponding driver is not installed, or the Type-C data cable connection is unstable.

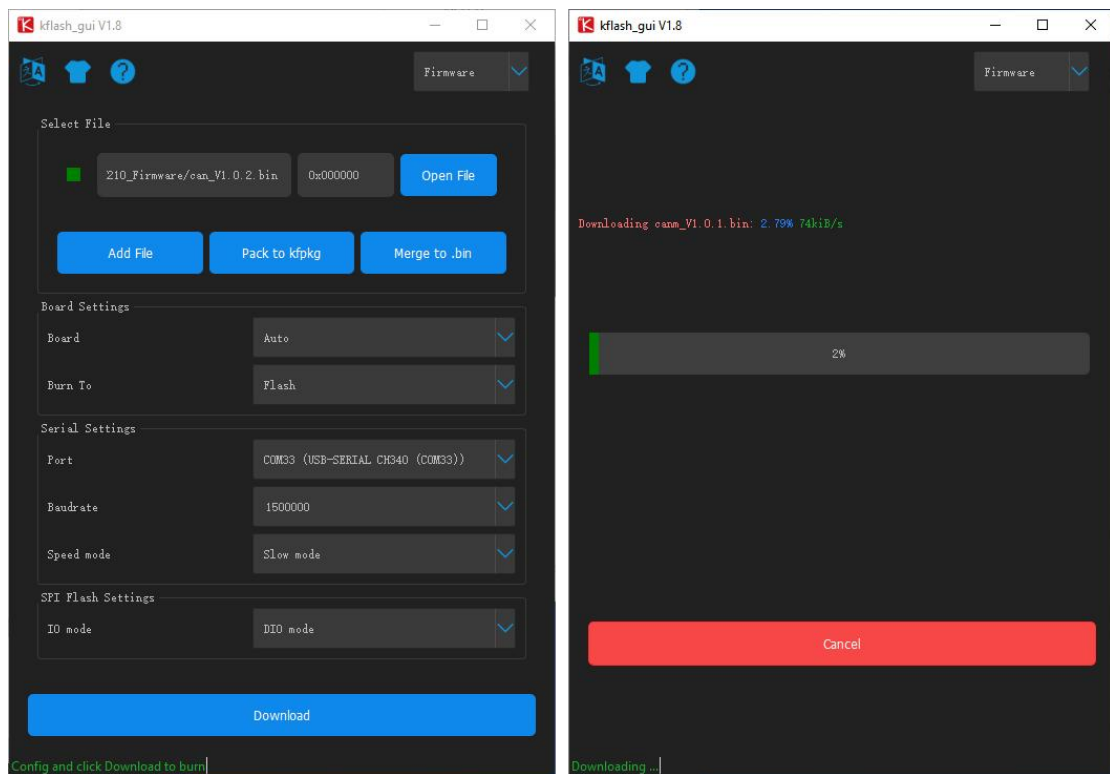
③Wait for the erase operation to complete. A success message will appear. Click "OK" .



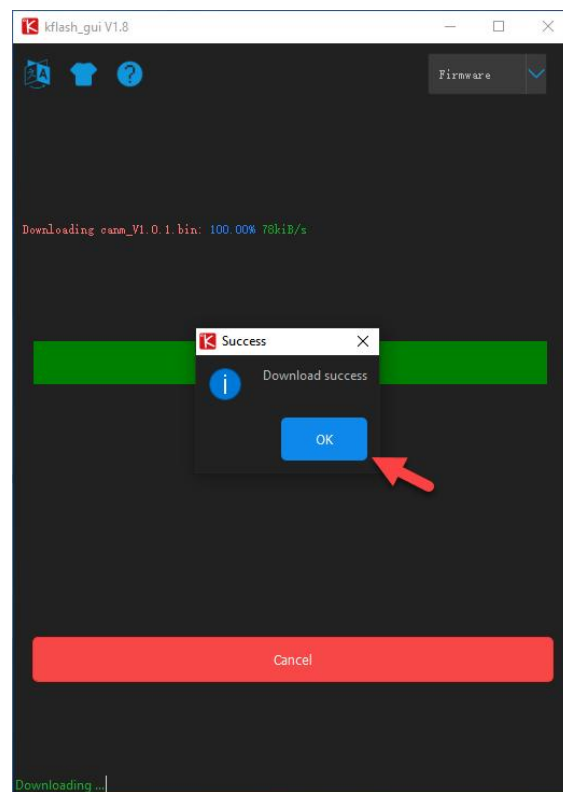
④After erasing, select "Firmware", click "Open File", navigate to the "can\_V1.0.2.bin" file in the specified path, and open it. Select the serial port and click "Download".





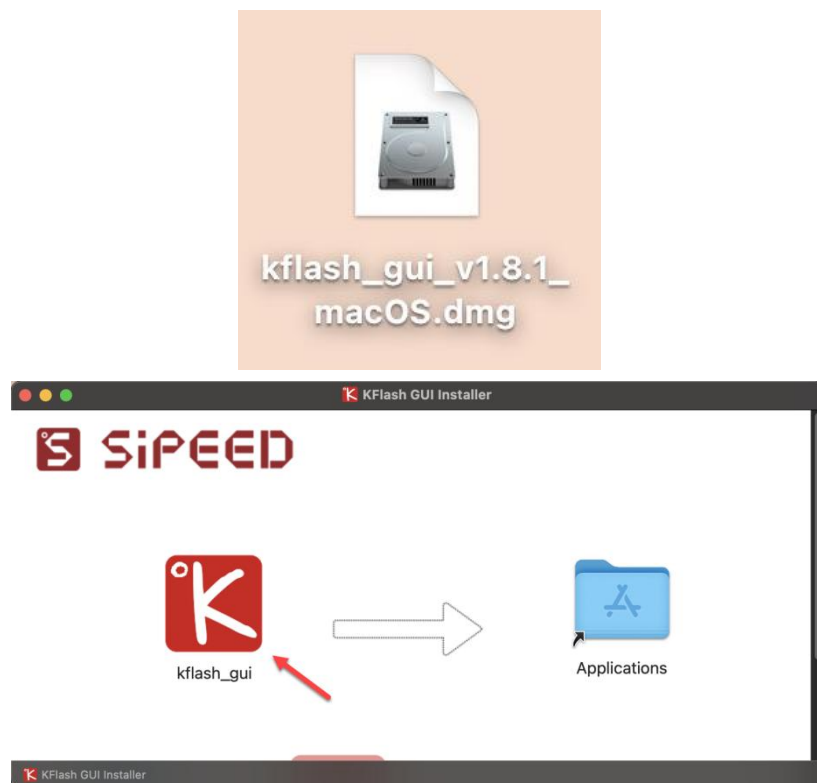


⑤After the download completes, click "OK". The firmware update is now complete. The camera will restart and function normally.



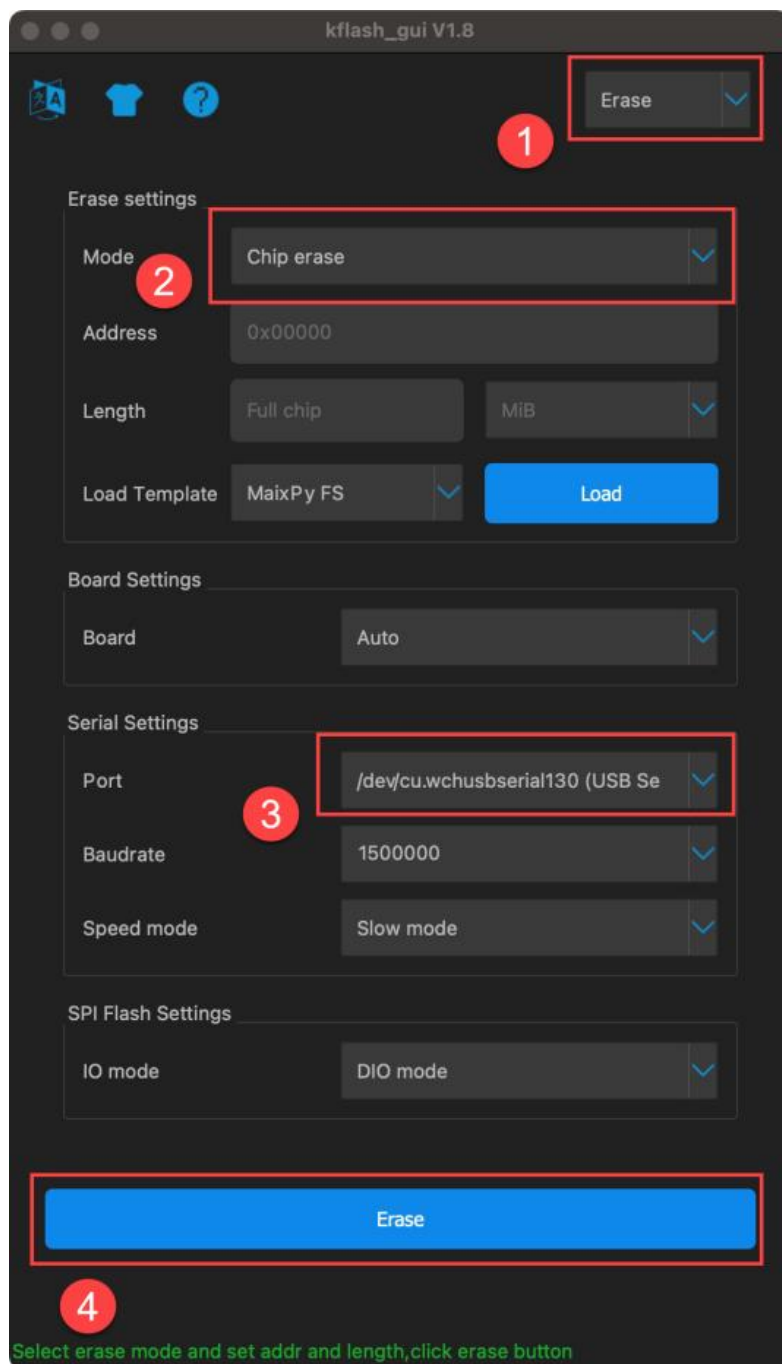
## 2) Firmware Update Method for the AI Vision Module on Mac OS Computers

①Open the "[kflash\\_gui\\_v1.8.1\\_macOS.dmg](#)" file located in "English\MakeCode car\5.Firmware Programming File\kflash\_gui\_v1.8.1\_macOS". The interface should appear as shown below:



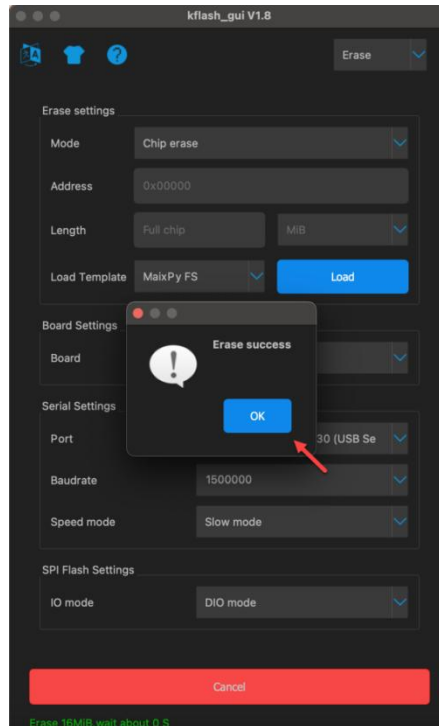
②Connect the AI vision module to the computer using a Type-C data cable. Before uploading the new firmware, you need to clear the original firmware in the module. The operation steps are as follows: Set the erasing mode to "Erase", then select "Chip erase" from the mode options; choose the port with the identifier containing "wchusbserial" from the serial port list, and finally click

"Erase" to perform the erasing operation.

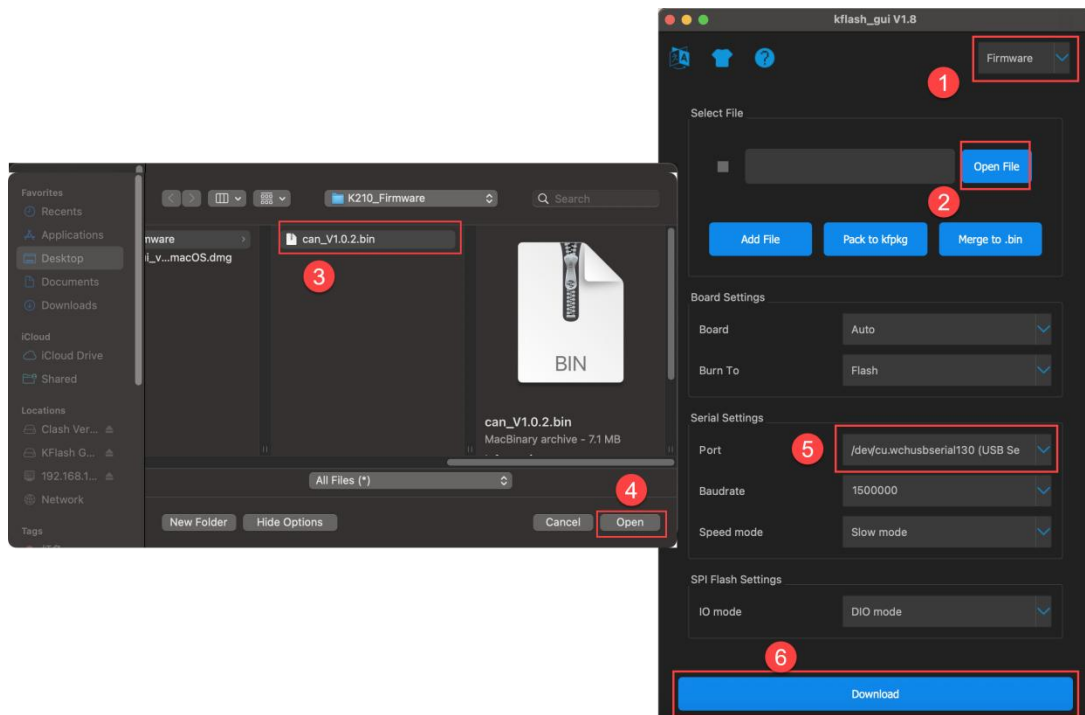


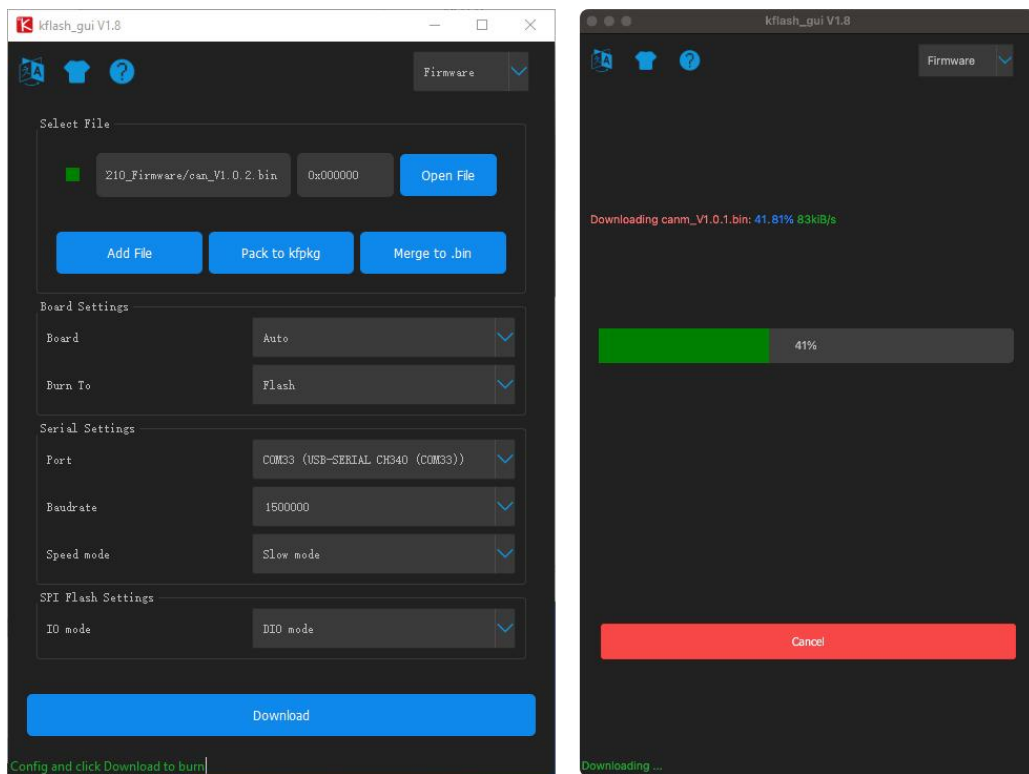
Note: If no available serial port appears, possible reasons include: the corresponding driver is not installed, or the Type-C data cable connection is unstable.

③Wait for a moment until the erase operation completes successfully, then click "OK".

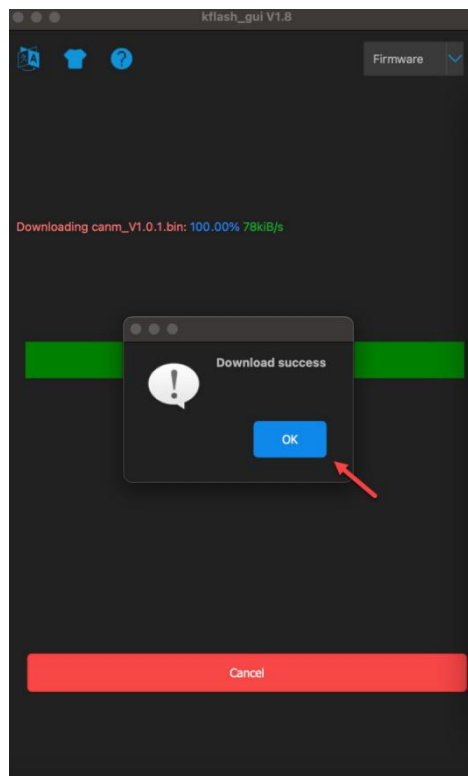


④After erasing, select "Firmware", click "Open File", locate and open the "can\_V1.0.2.bin" file in the specified path. Select the serial port and click "Download".





⑤After the download is complete, click "OK". The firmware burning process is now finished. The camera will restart and function normally.



### III. After-Sales Support

If you encounter any issues, please contact our after-sales team via email at **support@acebott.com**. We will respond to you within 24 hours. You can also scan the QR code below to follow us for troubleshooting guides and the latest updates.



ACEBOTT FB QR Code



YouTube QR Code